



# Trailblazer

A Newsletter Published by the Friends of Stevens Creek Trail

Fall 2001

## Latest Trail Developments

### Cupertino Status—Summer/Fall

So far this year there has been quite a bit of activity in Cupertino. Earlier in the spring the City of Cupertino reactivated the Stevens Creek Trail Task Force as part of a comprehensive feasibility study. The study includes four areas (A through D) within Cupertino from the border of Los Altos at Homestead/Foothill Expressway through the Rancho San Antonio County Park area—and on up the Stevens Creek corridor from Blackberry Farm to Stevens Creek County Park. The Task Force consists of representatives from open space, preservation, recreational and homeowner organizations. Susie Brain, FOSCT Executive Director is representing the Friends—while Board member Steve Haze is representing the Cupertino Historical Society on the Task Force.

Field trips have been conducted for each of the study areas in which the Task Force reviewed environmental, safety, privacy and technical challenges along potential alignments. The Consultants for the feasibility study have provided much information on the opportunities and impacts along these alignments. Later this fall, the Task Force will select a trail route from a variety of alignment alternatives with final recommendations to be forwarded to the Cupertino Parks and Recreation Commission—and ultimately, City Council. Supporters are strongly encouraged to attend these sessions. For more information please check the **Task Force web site at [www.rahul.net/green/sct](http://www.rahul.net/green/sct)**.



*Coming from Rancho San Antonio County Park towards the new neighborhood.*



*The O'Brien Development Team reviewing plans for the Stevens Creek Trail at the gateway to the neighborhood.*

On another note, the O'Brien Group Development Company as part of a new residential development has constructed approximately 200 yards of trail section. This neighborhood adjoins the proposed alignment for the Stevens Creek Trail near Rancho San Antonio County Park along Cristo Rey Drive. The trail section constructed by the O'Brien Group includes two ponds and a resting area for trail users as part of the gateway into the new neighborhood. The Friends, City of Cupertino and Santa Clara County Parks and Recreation Department worked with the Developer on the implementation. This clearly demonstrates that developers see that neighborhoods can greatly benefit from trails.





*The start of trail construction on Reach 4, Segment 1*

## Mountain View Trail Status

### Mountain View Reach 4, Segment 1

If you have driven past the crossing of highways 85 and 237 in the past few months, you may have noticed and wondered about the construction going on there. This is the birth of Reach 4, Segment 1, the next extension of the Stevens Creek Trail in Mountain View and a beautiful event to witness. This 0.4 mile section will extend the trail from its current ending at Landels School to Yuba Drive off of El Camino Real. Completion and opening of this trail section is expected in summer of 2002.

This seems like a short section of trail, yet it is very important and challenging. Several sections of the trail will be built as cantilever supported boardwalks with a magnificent view of the creek below. And, although only about 0.4 miles long, to get between those points today, without the trail, is a 3 times longer trip on the roads.

In May, workers began clearing brush and grading near the onramp to southbound highway 85 from 237 in Mountain View.

### Mountain View Reach 4, Segment 2

Since our last newsletter, great progress has been made towards getting Reach 4, Segment 2 built in Mountain View. In June, Mountain View City Council unanimously passed a 7 part motion which approved the Stevens Creek Trail Reach 4, Segment 2 draft feasibility study, endorsed the proposed alignment, endorsed three west-side and two east-side access points, and recommended opening each sub-segment as completed. They also directed staff to complete a full Environmental Impact Report (EIR) and to emphasize fire protection in the EIR and trail design. This was followed in early August with a City Council approval of \$120,000 funding for preparation of the EIR and selection of a consultant to perform the EIR.

In case you don't recall, Reach 4, Segment 2 will pickup where Segment 1 leaves off at Yuba Drive and extend the trail to Mountain View High School at the southern border. This will add approximately 1.7 miles to the trail, tie into two schools, and provide five new neighborhood access points. Mountain View continues to add additional trail segments for the benefit of its citizens.



*Rhonda Scherber, Founder and Past President,  
Friends of Stevens Creek Trail*

### Wishing Rhonda "Happy Trails"

The Friends of Stevens Creek Trail wished Rhonda Scherber, Founder and Past President, a fond farewell on Saturday, August 4<sup>th</sup>. A "Happy Trails" party was held for Rhonda at board member John Brazil's house and everyone thanked Rhonda for all her tireless efforts on behalf of the Stevens Creek Trail. The Friends' Board President, Steve Olson presented Rhonda with a lovely, framed photo of the trail taken by photographer and trail supporter Bob Weaver.

In the words of Scott Harger (long-time volunteer of Friends who also recently moved) "The Bay Area is losing one of its most ardent and effective trail advocates. The Friends of Stevens Creek Trail would not exist, and would not be the respected organization that it is, without the years of dogged leadership and backbreaking effort that Rhonda devoted to it."

Rhonda says she will definitely come back to Mountain View to visit friends and the Stevens Creek Trail. She especially looks forward to the dedication and opening of Reach 4, Segment 1, which is scheduled to take place in 2002.

We wish Rhonda and her family well in their new life in San Diego. Word has it that their new home has a trail very close by...



# Message from the President



My newborn son waited until his third day of life before hitting the trail. For now, of course, he is confined to his stroller or sling, but I can see in his eyes that he longs to be on his feet or on a bike; yes, the adventures awaiting him are limitless. And thanks to the Stevens Creek Trail, he now has easy and safe access to three nearby parks, where before he had none. Taking baby on a leisurely stroll affords my wife and me the luxury of really soaking in the atmosphere of the trail, rather than watching the scenery stream by with our typical pace. I've even overheard pieces of conversations as folks pass by us. My favorite was "You've never been to Shoreline? You're going to love it!" My least favorite was, "I can't believe they canceled the Trailblazer Race."

Yes, it's true. In spite of our best efforts, we were unable to secure a presenting sponsor for the race this year, which makes it financially prohibitive to hold the race. While we are confident that we will establish a new fundraising event (or the possible return of the Trailblazer) in 2002, the loss of the 2001 race is both an emotional and financial loss for the Friends. The great success of the race in past years has allowed us to hire a part-time executive director and support our stewardship and advocacy efforts. Just as important, however, was the tremendous support we received each year from our growing cadre of volunteers—and the opportunity to celebrate together in early October.

Even with this financial setback, The Friends continues to thrive as we look to expand our programs on the existing trail and continue with the significant advocacy gains we have made over the past half-year (see articles on trail status in Mountain View and Cupertino). We will now depend more on individual contributions to keep our grassroots organization viable. Your help, as always, is much appreciated.

## The Friends Need You

Just as many of you have said goodbye to friends who have relocated, so have we. This past year we have lost several Friends volunteers and board members. We are currently seeking individuals who may be interested in serving on the Friends of Stevens Creek Trail Board of Directors. We are in particular need of Cupertino residents. Experience is not necessary. Our aim is to generate community support for and involvement in the Stevens Creek Trail and Wildlife Corridor. For more information or questions call 408-255-5780 or 650-903-6067.



## How Can You Reach Us?

**Friends of Stevens Creek Trail**  
[www.stevenscreektrail.org](http://www.stevenscreektrail.org)

**Phone**  
 408-255-5780  
 650-903-6067 (voice mail)

**E-Mail**  
[friends@stevenscreektrail.org](mailto:friends@stevenscreektrail.org)

**Fax**  
 408-255-5781

**Address**  
 22221 McClellan Road  
 Cupertino, CA 95014



**Yes! I want to support the Friends of Stevens Creek Trail in their efforts to extend the trail through Mountain View and beyond.**

Name \_\_\_\_\_ Phone \_\_\_\_\_

Address \_\_\_\_\_ E-Mail \_\_\_\_\_

City \_\_\_\_\_ State \_\_\_\_\_ Zip \_\_\_\_\_

\_\_\_\_\_ Please send me information about volunteer opportunities \_\_\_\_\_ Please e-mail me action alerts and updates to extend and promote the trail.

\_\_\_\_\_ My company matches contributions! Company \_\_\_\_\_ Phone \_\_\_\_\_

\_\_\_\_\_ I will help FOSCT by making a tax-deductible donation of \$ \_\_\_\_\_

**Please make checks payable to: Friends of Stevens Creek Trail**

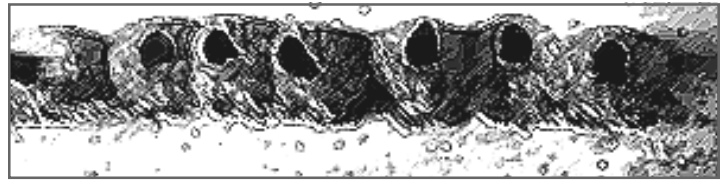
**If you have questions about memorials or other donations please call us at 408-255-5780 or 650-903-6067.**

[www.stevenscreektrail.org](http://www.stevenscreektrail.org)

# What is that bird?



Above: Cliff Swallows dining on insects Photo by: Don Baccus  
Right: Artistic rendition of the mud nests made by these curious birds



What is perhaps most distinctive about the Cliff Swallow is the nest of mud that it builds for itself—usually hanging upside down. These gourd-shaped nests can be seen under the Crittenden Bridge. The Cliff Swallow lays its eggs in June and the chicks take about two weeks to hatch. For food, the swallow vacuums up flying insects in its beak as it flies. It seeks out riparian areas where it can swoop low to the water surface where the density of insects is greatest. Included in its diet are flies, grasshoppers, ants, spiders and beetles. It is a threatened migratory bird and was placed on the National Audubon's Blue List in 1976, with additional designations in 1982 and 1986, primarily due to the loss of habitat. Bridges help create desirable habitat for this bird. Perhaps, bridge design and construction materials could be made more attractive to these wonderful birds. Learn more about this amazing bird at [www.birding.com](http://www.birding.com).



## Memorial Honors Trail Enthusiast

His name was Jos Claerbout. His love of Mountain View and special fondness for Stevens Creek were legendary among friends and family. His work at WebTV adjacent to the trail allowed, no beckoned, his use of the trail to commute, to roller blade for fun and to take his lunch breaks there. At age 25 Jos died of natural causes.

The Claerbout family approached the *Friends of Stevens Creek Trail* offering to finance a suitable memorial. In short order the perfect project was agreed upon—then the work began!

The Friends were fortunate to have Board member Tom Frankum agree to spearhead the effort. The project required almost a year of planning and Tom alone donated over 120 hours of volunteer time.

What was involved?—hundreds of phone calls, e-mails, faxes, visits and meetings. We accepted donations from local businesses such as Mintons Lumber. We visited nurseries, plumbing supply stores, City facilities. We worked with the Mountain View Parks and Recreation Commission, the City of Mountain View, the Santa Clara Valley Water District, Pacific, Gas & Electric, SGI, Synopsys and others.

The major collaboration of all these efforts was a big volunteer workday on Saturday, June 9 comprised of Jos's former co-workers, volunteers from the Synopsys "Green Team" and others from the community. Everyone had a great time planting nearly 200 trees and shrubs, installing a trash receptacle, painting fences and a bright new bench, then enjoying a pizza lunch donated by Tony & Alba's and donated refreshments from Whole Foods.

On Jos's birthday, June 14, a moving and uplifting ceremony was held at the memorial site, the end of Crittenden Avenue on the trail that Jos loved so dearly. The bronze plaque was unveiled, the crowd entertained by the family sharing Jos's witty writings and lunch provided by the Claerbout family.

Our thanks to the Claerbout family, Council member and former Mayor, Rosemary Stasek, Assistant Community Services Director, Paula Bettencourt, Luis Sanchez and principle volunteer and board member, Tom Frankum, and to all who offered their assistance.

The site is presently in its infancy but will grow into a beautiful amenity to be enjoyed by future generations. A much awaited drinking fountain has now been installed and is already appreciated by trail users. Please visit the Crittenden Lane Trailhead and enjoy!



Board Secretary, Ross Heitkamp and trail day volunteers working hard to beautify the trailhead.



Volunteer Bill Zuravleff and son Adam show themselves to be accomplished fence painters.



## Thank You Tony Look!



From left to right: Ross Heitkamp, Tony Look, Tom Frankum, Glenn Lyles, Rhonda Scherber, Jana Sokale and Gail Seeds



Mr. Claude "Tony" Look beside the plaque recognizing the trail portion named in his honor. To his right, John Redding, Chairman of County Parks and Recreation Commission and Paul Romero, Director, Santa Clara Parks and Recreation

If Tony Look isn't a household name among trail enthusiasts, it's not for lack of achievements. Claude "Tony" Look's resumé of accomplishments runs so long you'd swear it represented several organizations, not just one person.

In 1969, Tony founded the inaugural Trail Days and the Santa Cruz Mountain Trails Association. From his efforts with the first Trail Days grew the 26-mile Skyline to the Sea Trail. Over the next several years he played a key role in recruiting, training, supervising and feeding some 2,500 volunteers involved with completing this nationally renowned trail. So how successful were early Trail Days? Eleven years after the first Santa Cruz Mountains Trail Days, the event went state-wide. And it led to the first National Trail Days in 1992. Both the state and national events grew from Tony's creation of the California Trail Days Cooperating Extension, which later became the California Trails and Greenways Foundation. He has also been directly involved with the annual California Trails Conference.

That would be more than the most energetic of us could accomplish in a lifetime, but Tony was just getting started. He also co-founded one of the most well respected environmental organizations in the state, the Sempervirens Fund. During his 18-year tenure as its Executive Director the Sempervirens Fund purchased over 7,000 acres of precious redwood groves. And from 1980 to 1995, he served on the California Recreational Trails Committee, for several years as its Chair. In 1995, the American Hiking Society honored Tony as the Trail Volunteer of the Year in California.

In 1991, Tony was appointed to the Santa Clara County Parks & Recreation Commission, which brings his story back to our neck of the woods. Still active at the state and national levels, Tony found time to support and advise some local folks interested in creating a creek trail. Soon thereafter they formed the Friends of Stevens Creek Trail.

Tony and his wife recently moved to the Davis area where he claims to have retired. But in the same breath he'll tell you about all the trail opportunities he sees. We all look forward to hearing about his new accomplishments in years to come. Thank you Tony Look for your tireless, selfless efforts. You continue to inspire us all.



## FOSCT Volunteer Deserves Recognition

In this issue of the Trailblazer Newsletter I'd like to spotlight Friends volunteer, Cathy Godfrey. Cathy has been volunteering for the Friends of Stevens Creek Trail since September 2000. She has donated over 100 hours of her time helping with computer-related projects such as updating the newsletter recipient listing in the Friends database, as well as various projects using Excel for race registrations, donor lists, etc.

Cathy and her husband, Martin Taillefer live in Mountain View with their dog Kep. Cathy is Director of Program Management at WorldGate Communications in Campbell. She and her husband use the Stevens Creek Trail regularly. In fact, Martin works at Microsoft and walks to and from work everyday using the trail (occasionally Kep goes to work too!). On sunny weekends during warmer weather,

Cathy and Martin cycle to Shoreline Park via the trail enjoying lunch at the Lakeside Café.

When I asked Cathy what she most liked about the trail she said, "Stevens Creek Trail is such a beautiful part of Mountain View. When friends and relatives visit from the East Coast, we like to show off the trail...it's a wonderful contrast to the computer companies in this area and gives people a great insight to the personality of our city."

Thank you Cathy for all your efforts on behalf of the Friends of Stevens Creek Trail.

Susie Brain, Executive Director



## Board of Directors

Steve Olson  
*President*

Aaron Grossman  
*Vice President*  
*Interim Treasurer*

Ross Heitkamp  
*Secretary*

John Brazil

Tom Frankum

Diane Haze

Steve Haze

Ray Meyer, III

Preeti Piplani

Jim Stallman

Art Takahara

Susie Brain, *Executive Director*



The Trailblazer is a semi-annual publication sponsored by the Friends of Stevens Creek Trail. The Friends of Stevens Creek Trail is a nonprofit 501 (C)(3) organization. All contributions are tax-deductible to the extent allowed by law. The Friends of Stevens Creek Trail promote community pride and involvement in the completion, enhancement, and enjoyment of the Stevens Creek Trail and Wildlife Corridor.

# Thank You

The Friends of Stevens Creek Trail extend a big thank you to our generous trail donors and volunteers

### Trail Day Volunteers

Nick Anticevich • Jennie Burke • Mirio Ribera • Sam Brain • Debbie Chew • Diane and Jon Claerbout • Bonnie Doran • Tom and Jan Frankum • Betty Haruye Hoshi • Yvonne Heinicke • Ross Heitkamp • Kara Giannetto • Teresa Malo • Steve Olson • Andrew Powers • Diane Reedman and Tom Schaefer • Bob Slee • Chris Stadelmann • Rosemary Stasek • Alan Ross • Lauren, Bill and Adam Zuravleff

### Trail Donors

Helene Atkin • Suzanne Beaver • Ben & Jerry's Ice Cream (Santa Clara Store) • John Brazil • Tom Bromm • Diane and Jon Claerbout • Richard de Losa • Jan F. Feldman • Charlene Gomes and Roy Speckhardt • Aaron Grossman • Juniper Networks • Helen Lally • Michael Liberty • Leanne Luna • Lorna McDevitt • Jeff Miller • Carol and Steve Olson • Doug and Shirley Pearson • Alan Ross • Anita and George Thompson

---

**Newsletter Design & Production:** Chris Mendible, Page Creations • 408-249-7275

**Articles and Photographs:** Don Baccus, Susie Brain, John Brazil, Tom & Jan Frankum, Steve & Diane Haze, Ross Heitkamp, Steve & Carol Olson, Jim Stallman

**Friends of Stevens Creek Trail**  
**22221 McClellan Road**  
**Cupertino, CA 95014**

NONPROFIT ORG.  
U.S. POSTAGE  
PAID  
CUPERTINO, CA  
PERMIT NO. 466

After you read this newsletter,  
please pass it on to a friend.  
If you receive duplicate mailings, call us  
at 408-255-5780 or 650-903-6067.  
Thanks and enjoy the trail!