






CURRENT TRAIL PROJECT
(YUBA DRIVE-
EL CAMINO REAL)

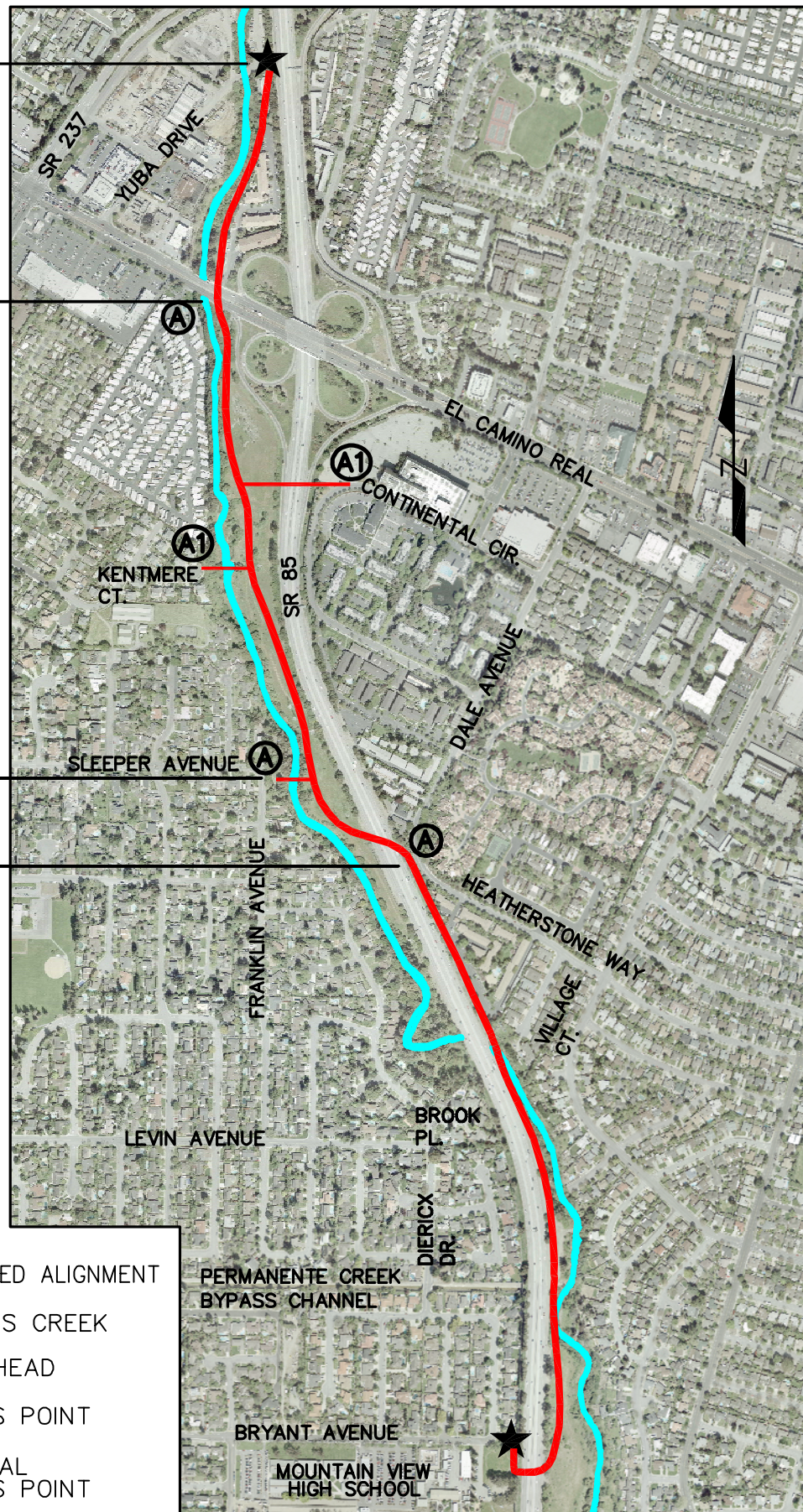
PROPOSED NEW TRAIL PROJECT
(EL CAMINO REAL TO DALE/HEATHERSTONE)

PHASE 2

PHASE 1

LEGEND:

-  APPROVED ALIGNMENT
-  STEVENS CREEK
-  TRAIL HEAD
-  ACCESS POINT
-  OPTIONAL ACCESS POINT



STEVENS CREEK TRAIL REACH 4 SEGMENT 2
APPROVED ALIGNMENT

